

A52 HALF PITCH WIRE TO BOARD CRIMP HOUSING

PITCH: 1.27mm * 1.27mm

SPECIFICATIONS

Material

Insulator : LCP, glass reinforced, rated UL 94V-0

Electrical

Current Rating : 1 Amp

Contact Resistance : 30 mΩ max.

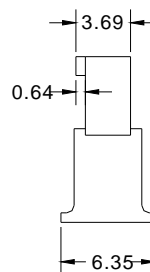
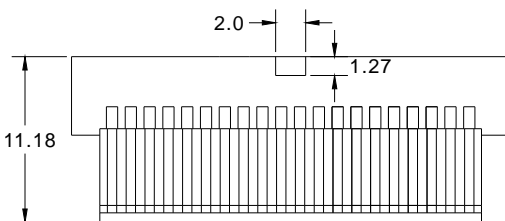
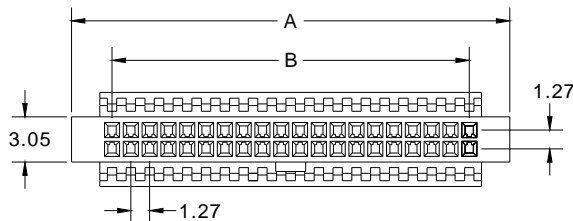
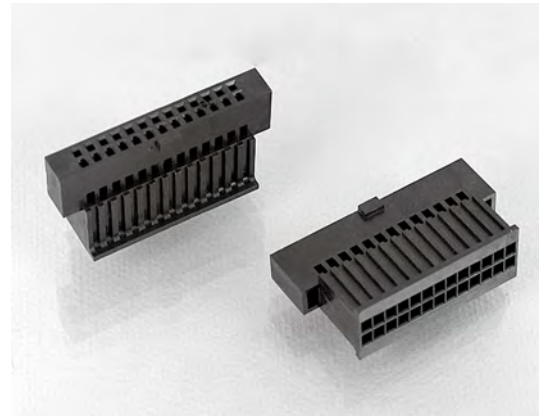
Insulation Resistance : 1000 MΩ min.

Dielectric Withstanding Voltage : 250V AC for 1minute

Operating Temperature : -40°C to +105°C

▶ Crimp Terminal Insertion : A52b series.

▶ Mating Suggestion : A70,A70a,C42,C42a,C42b,C43,C43a,C44 & C44a series.



POSITION	A	B
6	8.01	2.54
8	9.28	3.81
10	10.55	5.08
12	11.82	6.35
14	13.09	7.62
16	14.36	8.89
20	16.90	11.43
22	18.17	12.70
26	20.71	15.24
30	23.25	17.78
34	25.79	20.32
40	29.60	24.13
44	32.14	26.67
50	35.95	30.48
60	42.30	36.83
68	47.38	41.91
80	55.00	49.53



How to order: A52 - 1 - 2 - G(RoHS)

1.NO. OF CONTACT	2.INSULATOR COLOR
06 08 10 12 14 16 20 22 26 30 34 40 44 50 60 68 80	1. BLACK

