

A54 SINGLE ROW HALF PITCH IDC SOCKET

PITCH: 1.27mm

SPECIFICATIONS

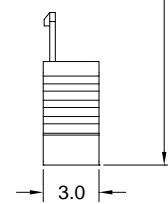
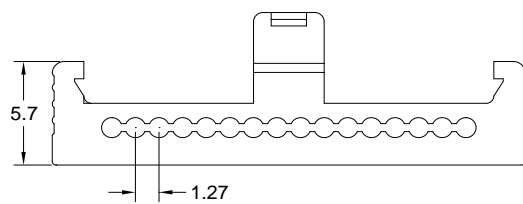
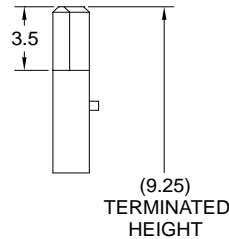
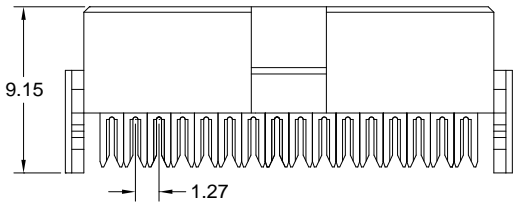
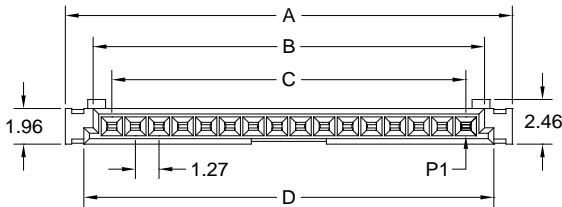
Material

Insulator : LCP, glass reinforced, rated UL 94V-0
 Contact : Phosphor Bronze

Electrical

Current Rating : 1 Amp
 Contact Resistance : 30 mΩ max.
 Insulation Resistance : 1000 MΩ min.
 Dielectric Withstanding Voltage : 250V AC for 1minute
 Operating Temperature : -40°C to +105°C

- ▶ Terminated with L01-1.27mm (26AWG) pitch flat ribbon cable.
- ▶ Mating Suggestion : A54b, A55a, C90, C90a & C91 series.



POSITION	A	B	C	D
2	6.27	3.28	1.27	4.28
3	7.54	4.55	2.54	5.55
4	8.81	5.82	3.81	6.82
5	10.08	7.09	5.08	8.09
6	11.35	8.36	6.35	9.36
7	12.62	9.63	7.62	10.63
8	13.89	10.90	8.89	11.90
9	15.16	12.17	10.16	13.17
10	16.43	13.44	11.43	14.44
11	17.70	14.71	12.70	15.71
12	18.97	15.98	13.97	16.98
13	20.24	17.25	15.24	18.25
14	21.51	18.52	16.51	19.52
15	22.78	19.79	17.78	20.79
16	24.05	21.06	19.05	22.06
17	25.32	22.33	20.32	23.33
18	26.59	23.60	21.59	24.60
19	27.86	24.87	22.86	25.87
20	29.13	26.14	24.13	27.14



How to order: A54 - 1 - 2 - 3 - 4 - G(RoHS)

1.NO. OF CONTACT	2.CONTACT MATERIAL	3.CONTACT PLATING	4.INSULATOR COLOR
02 03 04 05 06 07 08 09 10 11 12 13 14 15 16 17 18 19 20	B: PHOSPHOR BRONZE	T: TIN PLATED S: SELECTIVE G: GOLD FLASH A: 5u" INCH GOLD B: 10u" INCH GOLD C: 15u" INCH GOLD D: 30u" INCH GOLD	1. BLACK



DON CONNEX
ELECTRONICS CO., LTD

T:886 2 86483356 | F:886 2 86485885
e-mail:info@donconnex.com.tw



Connector:E163339 | Flat cable:E162690
Wiring Harnesses:E312257