

A64 EDGE CARD WIRE TO BOARD CONNECTOR (CRIMP HOUSING)

PITCH: 2.54mm

SPECIFICATIONS

Material

Insulator : PBT, glass reinforced, rated UL 94V-0

Electrical

Current Rating : 1 Amp

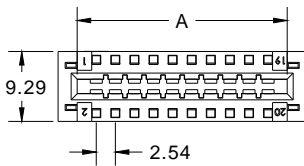
Contact Resistance : 30 mΩ max.

Insulation Resistance : 3000 MΩ min.

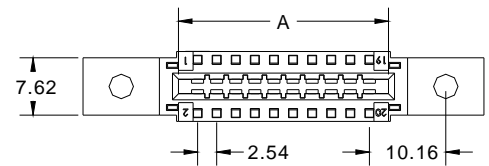
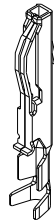
Dielectric Withstanding Voltage : 500V AC for 1minute

Operating Temperature : -40°C to +105°C

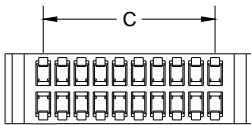
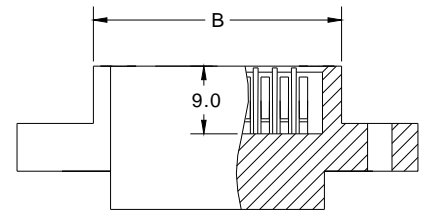
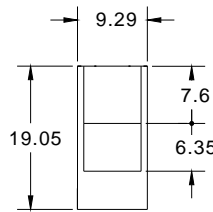
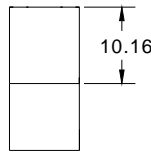
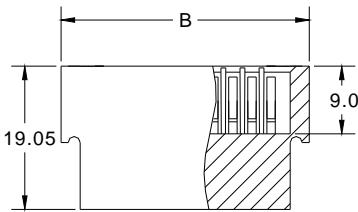
► Crimp Terminal Insertion : A64a series.



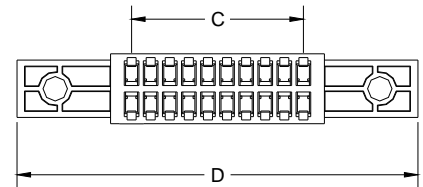
(TYPE A)



(TYPE B)



POSITION	A	B	C	D
10	15.27	20.32	10.16	40.64
14	20.35	25.40	15.24	45.72
16	22.89	27.94	17.78	48.26
20	27.97	33.02	22.86	53.34
24	33.05	38.10	27.94	58.42
26	35.59	40.64	30.48	60.96
34	45.75	50.80	40.64	71.12
40	53.37	58.42	48.26	78.74
44	58.45	63.50	53.34	83.82
50	66.07	71.12	60.96	91.44
60	78.77	83.82	73.66	104.14
64	83.85	88.90	78.74	109.22



How to order: A64 - 1 - 2 - 3 - G(RoHS)

1.NO. OF CONTACT	2. INSULATOR TYPE	3.INSULATOR COLOR
10 14 16 20 24 26 34 40 44 50 60 64	A: WITHOUT EAR B: WITH EAR	1.BLACK

